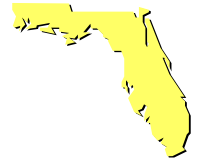




Florida Federation of Chapters

Protecting the Future for Active and Retired Federal Employees



March 2009



President's Podium

By Don Stewart, President

The Federation is fast approaching another Convention. Deadlines are just around the corner and there is little time left to submit Chapter ads and booster lists for the program book. We also hope members will get commercial ads as well. Convention General Chair John Ventura has introduced several innovations we hope all will enjoy. A last minute addition is that University Village of Tampa will host a complimentary luncheon for a presentation on their facilities. Seating will be limited to first come first served. Details will be available at registration.

Dues withholding contests at Federation and district levels are outpacing last year's excellent effort. Dues withholding is convenient and gentle on the wallet. You get a break on National dues and spread out over 12 months, a true bargain! If you have not signed up, there will be a table at the Convention where you can get all the details and enroll.

Annual District Meetings went very well and attendance exceeded last year's. Retention, Legislation, PR, leadership responsibilities were among the topics covered. Time allotted for questions led to lively discussions with many excellent suggestions. First time DVPs did outstanding jobs introducing a successful, fresh approach complementing presentations by DVPs with previous experience.

I refer you also to the article on the Federation's Second Alzheimer's Fund Raising Cruise. There were just under 80 members and friends of NARFE who helped raise slightly over \$5,500. When totaled with the amount we collected last year, Federation cruises have raised just under \$10,000 which was donated to Alzheimer's research. Thanks to all who helped organize and support this most worthwhile effort.

We continue to emphasize Membership Recruitment and Membership Retention where we have two outstanding Chairs. However, Recruitment and Retention is everyone's business! Without everyone's help, the task is monumental. Recruitment tables were displayed at statewide events and fests to publicize NARFE. Fortunately, chapters have helped by manning tables. Retention is being approached in several ways, but primarily by forming Retention Committees in the various Districts. These efforts are in the first stages of implementation, but continuing with this thrust, membership statistics will improve.

The Federation Service Officer has brought back into the focus the FLFED Service Centers. For too long, they have been our "silent service!"

Congratulations to the Federation Automation Chair and Federation Secretary for the excellent web site we can boast about, which is one of the best if not the best!

Since the Federation took over organization and management of Conventions, they have been institutionalized and simplified. Individual Chairs have mastered their positions as have the respective committee members, thereby providing continuity and stability. Our hotel facilitator has negotiated excellent rates for attending members and the hotel continues to offer a wonderfully hospitable atmosphere.

Continued on page 11

Cruise raises \$5545 for Alzheimer's

The Florida Federation's Second Alzheimer's Benefit Cruise in December raised \$5545 for Alzheimer's research. 78 NARFE members and guests enjoyed a fun filled 9 day cruise to Panama, Costa Rica and Belize. Read the entire report on page 4 and see extensive pictures on page 5 and on www.narfefl.net.

Shown at right are Federation Immediate Past President Ben Pappa and Federation President Don Stewart presenting the \$5545 check to Leonora Sicular, Federation Alzheimer's Chair.





Communications is the Key

By Wally Roepke, Executive VP



How do I tell you about Membership or Legislation or Service or any of the other areas of concern that NARFE covers without communicating? Can't be done! One of the issues that your Federation has worked very hard on over the past years is communication. We are told by National that communication begins at the Chapter level and works from the ground up. National tells us that they do what we tell them we need to get done. In my book, communication is a two-way street so we should be getting information from National as we send information to them. It has not worked that way very well in the past but times are changing. In just the past four months our National office staff, with the guidance of Margaret Baptiste, our National President, has; 1)protected our FEHBP from extensive out-of-network charges, 2)worked hard on getting members to help move the Premium Conversion tax benefit to the Stimulus Package as an attachment, 3)supported Stimulus tax relief for all government retirees that was left out of the original bill but got replaced due to NARFE action and 4) got the GPO/WEP back in the hopper as H.R. 235. These actions provide a powerful incentive for recruitment and retention. Now, to help our District and Chapter officers, or potential officers, even more directly, your Executive Board at its recent February meeting agreed that communicating is important. But it was not called communication. We are calling it training. It has been proposed that an Executive Board member will be designated Training Officer for the Executive Board. The job of this Training officer will be to prepare and keep up-to-date a training manual that every DVP will have covering every aspect of every officer position in the Chapter. Each DVP will be able to prepare and pass along to the Chapter Officers the specific information they need to better serve their members. If I am elected as your next Florida Federation President I will be implementing this training by the Federation, with the help of the Executive Board, to support every Chapter. This is an idea just being born, but look for it before summer is gone.

Another important aspect of communication is knowing where to find the information that one needs. President Obama is very aware of this problem. He established a web site specifically to tell the American public where, when and how much of our Stimulus money is being spent by each Agency and Department in the Government that is handling distribution of Stimulus money. This will be an active and growing web site since the information will change, perhaps daily, as the Agencies and Departments determine how to best distribute the funds. This web site will give every American the ability of to have direct communication with the office of the President. You can find this web site at www.recovery.gov.

This article appears to be directed at only those with computers but this is not true. Anyone can make the same contacts by calling 1-866-220-0044(TOLL FREE). This takes you directly to the Capital switchboard where they will ask you what office you want. If you have questions about any statement or issue mentioned in this article please contact the author, your District VP, Federation Legislative officer or any Executive Board member for clarification.

2009 Federation Convention May 12-14

By John Ventura, Chairman



Are you planning to go to the Florida State Convention in May 2009? If not, I think you had better read on as you are in for a different type of celebration this year.

Tuesday night, instead of leaving for a meal & show off in the town some where, we will have a great buffet from 5:30 to 6:30pm, and afterwards **Bingo Night**. We will have the room set up like a bingo hall, with a caller, a recorder, and spotters. Winners will be awarded gift cards supplied by the Convention Committee to either Publix or Wal-Mart, thereby permitting you to make your own selection of what you may want or need.

Wednesday night, instead of a semi-formal night, it will be **Hawaiian Night**, opening with a pool-side Cocktail Party (cash bar). Dress will be casual, so men bring your loud shirts & ladies bring your Hawaiian hula skirts, or mumus. There will be fun for all. The decoration committee has been working very hard to make this a night to remember. I think you will all enjoy it. A great meal will be served and the music will have a Hawaiian theme.

The flyer and reservation form have been mailed to all chapter presidents, so get with them and make your reservation early for this year's convention because the rooms fill up fast and you don't want to miss out on this fun filled convention. I hope to see you all there.



Chapter must file with the IRS

By Ken Carter, VP

This is a reminder that all chapters are required to file a 990, 990-T, 990-EZ, or a 990-N. The form you use is determined by the amount of income you had for the previous year.

If you did not have any taxable income in 2008, you are required to file a 990-N, which is an Electronic Notice (e-postcard) for Tax Exempt Organizations. It is only available online at: <http://epostcard.form990.org/>. Chapters that file a 990-N for 2008 should know the password that was used last year, in addition to their Employee Identification Number (EIN). If you do not know your EIN, contact the NARFE Budget and Finance Department at (703) 838 7760 or email budfin@narfe.org.

All IRS forms require you to put your Group Exemption Number (GEN) on all IRS forms. NARFE's GEN is 1599.

File form 990-T if your chapter had a gross income of \$1,000 or more derived from an activity that was unrelated to the main purpose of NARFE such as, Membership dues, interest on dues, bake sales, and white elephant sales are excluded but revenues such as advertising revenue are included in activities unrelated to the main purpose of NARFE.

File form 990 or 990-EZ if your chapter had gross receipts of over \$25,000 on average over a consecutive period of three years including 2008. Your chapter should file the Form 990 even if it is not liable for taxes. Complete all forms fully and the filing deadline for IRS forms is the 15th day of the 5th month after the close of the chapter's fiscal year.

NARFE is a 501(c)(5) organization and is exempt from federal income tax. NARFE is not exempt from state and local taxes.

I wish to change the subject of this article. I have submitted my nomination papers for the position of Executive Vice President. Thank you very much for the support you have given me this past year. I will continue to work for NARFE and hope to keep your support.

From the Secretary's Desk

By Bill Leatham, Secretary



2009 Convention work is well under way, with two Federation By Laws amendments and a National By Laws proposal received within deadlines. I am the writer of one resolution that will save time and money in the future, starting with 2010. Two officer nominations are also in hand.

I will be sending out hundreds of letters in March to both Chapter officers and Convention Committee Members using the National membership data, so it is important that you keep your address updated by logging into www.narfe.org and navigating to "Update Your Membership Record" to ensure that you get your needed information. Over 2,000 pages of printed matter will be mailed. I average 3,300 pages of paper a year, with 90% typically being convention-related.

F-7's, Chapter Officer Roster Forms are still coming in every day. As usual, the "good" Chapters typically send me more than one, reflecting newly added or resigned officers, meeting location changes, etc., and the "bad", none. I can only send convention materials to chapter officers on record with National, so if your information on National is stale, or the officer has not updated his/her address, your chapter will suffer. The last newsletter illustrated this clearly. A copy sent to a Chapter Secretary was returned by the Post Office. The address was not updated. If you are unable to update your record, your Chapter's Membership Chair can help you.

And, I need to congratulate one or two Chapters for their recruiting success. They are latching on to members that are either new to NARFE or new to Florida and getting them active as officers so quickly that the record from National has not caught up with them. GOOD WORK!

The conversion of the old Historian records is moving at a snail's pace. I am now into materials that are so large and brittle as to make their scanning difficult.

Please note that I may be slow to respond to requests in early March, as I will be recovering from a minor repair. I should be back to normal to celebrate St. Patrick's Day. Erin Go Bragh!



Second Annual Alzheimer's Cruise Report

By Benjamin J. Pappa Jr., Federation Immediate Past President, 2008 Alzheimer's Cruise Chair



Some of the 78 members and guests on the 2008 Cruise

I am very happy to report that the Florida Federation's second annual Alzheimer's fund raiser cruise was a huge success in both the funds generated that will be sent to Alzheimer's research by direction of the Executive Board at the February EB meeting, and that a very pleasant cruise was had by all. Seventy eight NARFE members and guests enjoyed an 8 night - 9 day cruise aboard the Carnival Miracle, visiting the ports of Panama, Costa Rica and Belize. Once aboard ship we found well appointed accommodations, an outstanding selection of food with something available for everyone's taste, and service by a well trained staff.

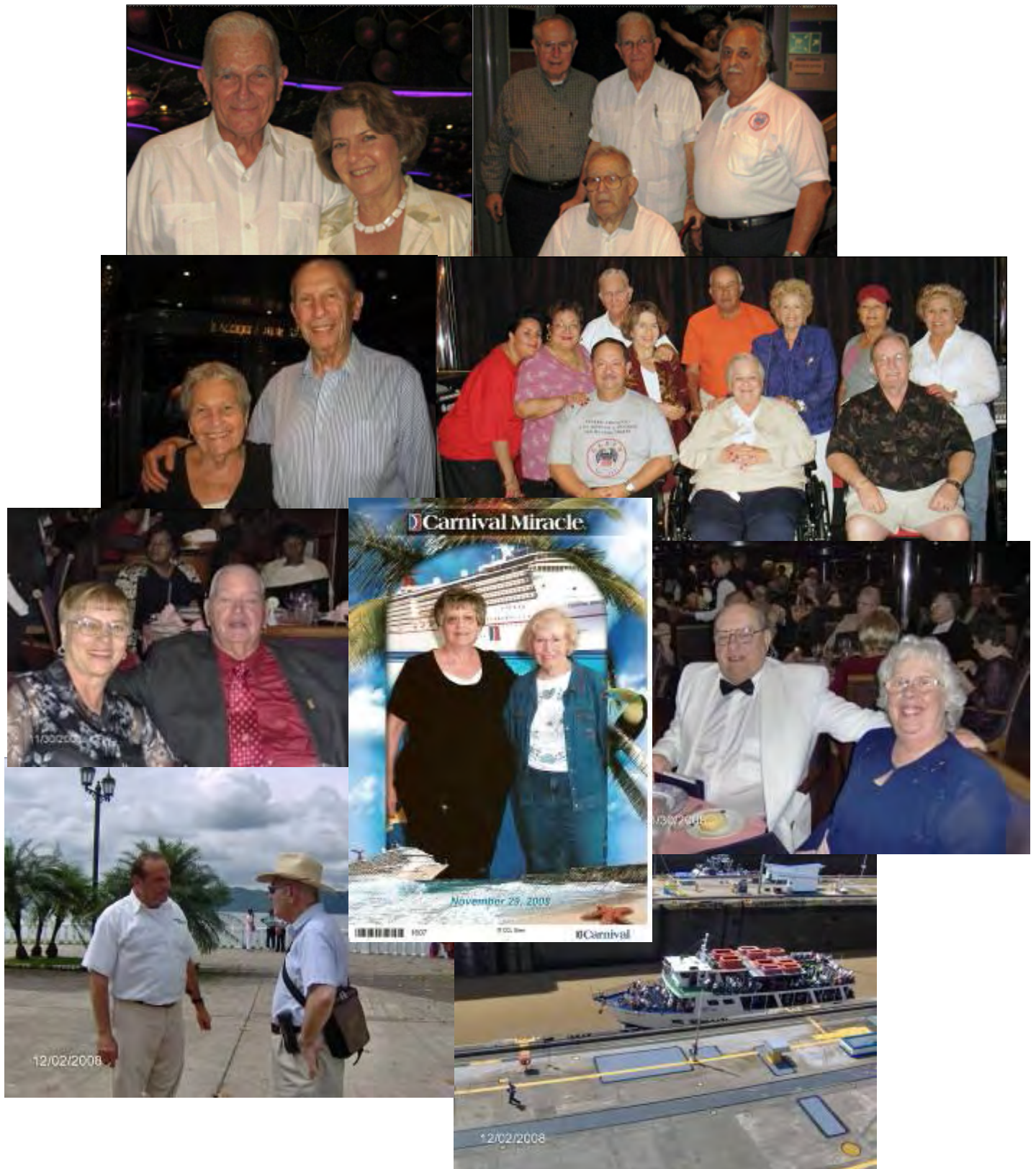
In the Port of Colon, Panama, several went ashore and enjoyed various tours of the area, some took the ferryboat ride through the canal, others took the train ride across the Isthmus to Panama City seeing the canal on the way across and were bussed back through the rainforest, and still others took local tours seeing Colon by bus. We did not fare as well in Limon, Costa Rica, a heavy rain storm resulted in most of the shore tours being canceled. Belize on the other hand was very pleasant, temperature was great with sunny skies. Many went ashore to a very clean and well presented tourist area, nice shops, and pleasant restaurants. Our days at sea were filled with events that many enjoyed, or by just doing nothing, but at night after dinner, we were treated to first class entertainment. Dinner each night was also an event, we were able to have all ten of our tables close together, and it became a family like event, not only with those at their table, but with others at surrounding tables.

This cruise has become an event that not only provides those participating with a pleasant vacation at a reasonable price, but provides funds that go to a worthy cause, Alzheimer's research. Most all that attended this year's cruise have requested that information on our next cruise be sent to them. Currently information is being researched to come up with a follow-up cruise, and once it is put together, flyers will be sent out to all 76 Chapters and several members and guests that have requested this information.

On behalf of the Florida Federation of Chapters, our President Donald Stewart and myself, I wish to again thank all of you that made this cruise a success and a very special "Thank You" to our Travel Agent Phyllis Bernstein, who made all this possible.

Alzheimer's Benefit Cruise

A lot of pictures were taken on the 2008 Alzheimer's Benefit Cruise. These are just a few. Go to www.NarfeFl.net to see more





Recruiting is a Contact Sport

By Ed Fleck, Chair

The economy is on everyone's mind as we watch our investments take unfavorable turns. An investment that has not taken an untoward turn, so

far, is our retirement and health insurance benefits. As I tell audiences, our benefits are in jeopardy as Congress evaluates how to cut corners, and cut money, and all the bureaucrats have to do is draw a line through a benefit, vote on it, and wham, it's gone.

To combat such a monetary disastrous (to us feds) event, we, as NARFE members, need to have our voice heard. To do that, and to make our voice meaningful, we must have clout. The more members we have, the more clout we have. That is where recruiting comes into "play." While getting new members is not "play," nor is it even a game, nonetheless, RECRUITING IS A CONTACT SPORT. I use those five words (and repeat them) when I speak to groups of our members, such as at district meetings, of which I have spoken at three in the last month. RECRUITING IS A CONTACT SPORT even when we are playing defense, which protecting our earned benefits frequently requires.

At these district meetings, I have a little drill where the only members remaining standing are those who have in their possession a mail-in NARFE application form F-14C, and a dues withholding form DW-3. If you attended the convention last year, you will recall I did that drill there also, and out of several hundred attendees, only 3 were left standing. When I went to a District 9 meeting, it was the second consecutive year I had done this, and I was pleased to see that the number had jumped from one to about 15. I was impressed with the improvement. Of course, 100% would really be terrific.

My point is that just like the defensive driver, we must be prepared when we meet a challenge. Any non-NARFE member "fed" is your challenge. Be prepared to give a 30 second NARFE commercial and then whip out that application and DW form (only retirees can use DW), and plant it on your friend. How many of you have even spoken with your letter carrier about NARFE?

I continue to attend Senior Fests on the Florida west coast, and while I notice attendance is



Retention

By James Greene, Jr, Chair
Bob Lemley, Vice Chair

The interest in retention of members is increasing throughout the Florida Federation. New ideas are being tested by chapters in trying to reinstate and retain their members. Some of these are making more and frequent contact with members, sending postcard reminders of meetings and speaker info, scheduling quarterly night meetings to accommodate working and volunteer members.

If this movement spreads throughout Florida, it will solve many of our problems with renewal of annual membership.

There is also an increase of interest in the dues withholding program. More chapters are signing up new first time members under that program, as well as encouraging existing members to save money by utilizing the monthly dues withholding in lieu of the regular once per year at a higher cost.

Last, but not least, if you do not meet during the summer months, please have one or more of your chapter officers to review the M112 Monthly Chapter Reports and contact the new members, the ones on second notice, and the dropped members. It will make a difference in your retention for the chapter.

If you need help with retention, you may call me at 239-482-6713 or email poandbogra@comcast.net, or call Bob Lemley at 863-607-4844 or email blemley@mac.com.

How Safe is Your Federal Retirement?
Contact the Experts 1-800-627-3394 www.narfe.org

down, there are always a dozen or more potential members who visit my booth. I have appreciated the assistance I have received from several chapters at these events.

If you become aware of a recruitment opportunity in your area, consider signing up. Order your NARFE supplies by using the F-18.

If you ever need my assistance, please do not hesitate to contact me at EEFLECK@AOL.COM or 813.961.4259.

Recruiting is a Contact Sport

District 5, Chapter 1224, Federation Recruiting Chair at Florida State Fairgrounds Senior Fest



Bob Lemley, Jane Lemley, Pat Staley and Ed Fleck



Jane Lemley, Bob Lemley, John Darsey, and Ed Fleck



Ed Fleck speaking to some attendees



Bob Lemley speaking to an attendee



Ed Fleck speaking to another attendee



Bob Lemley, Joanna & Stanley Frazier, Jane Lemley, Ed Fleck



Dues Withholding Contest

By Beulah H. Greene, Chair

The Florida Federation Dues Withholding Contests ends April 30, 2009. Entries are running ahead of last year with 91 applications received to date. 29 of those came in since January 1st.

I would like to encourage every chapter to sign up at least one member on dues withholding before the contest ends.

At this time we have 28 chapters participating from 10 Districts. 16 of these chapters did not participate in the contest last year. 5 Districts have qualified to have their own District Contest for drawings of 1 \$50, and two \$25 winners in their District Caucus on Wednesday at the convention. The regular drawing for 1 \$200, and two \$50 winners will be on Thursday, and every member that signs up this year will be qualified for that drawing

In order for a District to have their own contest, they must have at least 5 new Dues Withholding applications before April 30, 2009. The Districts that have qualified so far are: District 3, Charlie Shannon, DVP, with 20 entries; District 8, Sylvia Ventura, DVP with 20 entries; District 9, Richard Gerber, DVP, with 19 entries; District 11; Jim Greene, DVP, with 8 entries; District 6, Tony Torchia, DVP with 7 entries, District 7 with 5 entries.

Two chapters have 10 new dues withholding applications to date:

1713 North Port, District 8-Jo Cibolski, Membership Chair

1154 North Tampa, District 9-Toni Mahig, Membership Chair

New Port Richey Chapter 0583, District 9-Joe Harnishfeger, Membership Chair, has submitted 7 new entries, even though they have approx. 73% of their members already on Dues Withholding.

Again, I ask the Chapter Officers and Chairpersons to sign themselves up for Dues Withholding, then to encourage their members to use this easy and cost savings method of paying their dues regularly.

For Retention of your members, this is a proven method!

Region III

By Bob Harrell, Region III VP



As I prepare this report, I am one visit away from attending all the Florida District meetings. Peggy and I have thoroughly enjoyed the hospitality and seeing our many friends in this wonderful state of Florida. We return home to Alabama upon the completion of the Florida Executive Board meeting in Altamonte Springs.

I have certainly been very pleased with the attendance at these meetings and enthusiasm shown by the attendees. The message that I take with me is that the Florida Federation is in good shape. We have a large contingent of new District VP's and the atmosphere at these meetings has demonstrated their competent leadership to carry Florida NARFE forward. I am taking many of your concerns with me to our next NEB meeting in March.

The message that I have strived to leave with you is that with chapter control of NARFE comes responsibility of each of our chapter members. We must find ways to increase participation by the members of our chapters. (We must also work to find a way to reduce the largest group in NARFE -- that is the group of members that DO NOT attend chapter meetings nor do they find a need to participate in chapter functions.)

Another major concern at NARFE is the uncertainty of the actions of the 111th Congress. We must prepare to react to the "Perfect Storm" by finding "key spokesmen" in each Congressional District to help get our message to their members of Congress. Chapters need to prepare an "Action Committee" that can reach out to the chapter members when a legislative alert is forwarded from the NARFE Legislative Staff. If we are going to be successful in protecting our earned benefits, it will require that each one of our members contact their respective Congressional Representative and pursue our legislation.

REMEMBER...SUCCESSFUL LEGISLATION BEGINS AT HOME IN THE CONGRESSIONAL DISTRICT.

Until your Convention in May, Peggy and I say so long to our many friends in Florida. Thanks again for your hospitality and we will see you soon.



Public Relations—Reach out and Teach

By Marc Harris, Public Relations Chair

Last issue, I provided an outline of the basic responsibilities of a Public Relations Chair. For chapters without a PR Chair, this responsibility falls to Chapter Presidents. In this issue, I define Public Relations and our audiences.

Public Relations is a management function that creates, develops, and carries out policies and programs to influence public opinion or public reaction about an idea, a product, or an organization. At NARFE, **Public Relations** coexists with your **Recruiting, Retention** and **Legislative** efforts.

Why is Public Relations important for NARFE? We need to gain and maintain public understanding and support for NARFE as the primary advocate for federal employees and retirees and their dependents. We do that through Public Relations.

Public Relations has two segments we must reach out to and teach about NARFE.

1. **Internal Public Relations**, which is aimed at **NARFE members**.
2. **External Public Relations**, which is aimed at the **general public**, with special consideration given to the following targeted audiences: **potential members, elected officials, groups and organizations with shared concerns and interests, and the media**.

A more extensive explanation of NARFE Public Relations can be found in the PR section of www.NarfeFL.net, along with a PR slideshow I designed to be used for training purposes. NARFE National also has an excellent Public Relations Handbook that is available on-line at www.narfe.org. Hard copies of the Handbook also can be ordered from www.narfe.org, and I hope to have copies at the convention.

I am available to help your PR efforts...just give me a call or send me an email.

Chapter Assistance Program Alert

By David Whalen, FLFED Past President, Chapter Assistance Program Chair



DVPs and CHAPTERS - BE AWARE. CAP funds are in short supply for the remainder of the year. The second year of the program has been very successful. Apparently Chapters like the idea of receiving financial support from the Federation. Some Chapters have also successfully applied to National for Matching Funds.

As of February 22, 27 Chapter requests have been approved for a total of \$4809. The approved budget for this year is \$5800 (it was increased \$800 at the February EB meeting) so there is only \$991 left to be distributed. Will your Chapter share in this balance?

Any request for CAP funds received after the current budget is exhausted will be considered in June, assuming that CAP funds are in the Federation budget next year.

DO NOT DELAY. Under the current budget only five more Chapter requests can be approved. All it takes is having a reasonable plan to promote recruiting, retention, or public relations at the Chapter level. A simple analog (hard copy) or digital form is required to document the plan to receive CAP funds. The digital form in MS Excel is preferred and can be sent and processed by email.

Insulin protects brain from Alzheimer's

By Leonora Sicular, Alzheimer's Chair

(Source: uk.reuter.com) Insulin appears to shield the brain from toxic proteins associated with Alzheimer's, U.S. researchers said. Dr. William Klein, Northwestern University, said the findings support a new idea that Alzheimer's is a type of diabetes of the brain. "In Type 1 diabetes, your pancreas isn't making insulin. In Type 2 diabetes, your tissues are insensitive to insulin because of problems in the insulin receptor. Type 3 is where that insulin receptor problem is localized in the brain" said Dr. Klein. "Our results demonstrate that bolstering insulin signaling can protect neurons from harm." "Mark Warner" agelessd@aol.com 2/03/09 Thank you for the article also in Health News 2/04/09 Angel L. Almodovar

At your service

By John Ledman, Service Officer



Keep your latest annuity adjustment forms

It is that time of the year when we receive the Annuity Adjustment forms. Normally we receive two each year, one in late December for the Cost of Living Adjustment (COLA) and one in January that reflects the change in Federal Employee Health Benefits (FEHB).

I recommend that you file the last two of these Annuity Adjustment forms that you receive each year with your important papers. They have a lot of good information on them: your CSA or CSF number and details about your annuity. For those who have provided benefits for a survivor it also shows how that benefit will be affected by the COLA. The back has the toll free number and address for the Office of Personnel management (OPM), procedures for notifying OPM of deaths, changing your address and how to contact OPM. Also detailed information about survivor benefits including for the spouse you were married to at retirement as well as for a spouse you marry after retirement. By keeping the last two of these Annuity Adjustment forms you or your survivor will have up to date information when the need arises.

Chapter Newsletter Editors should include this reminder in their next issue and Service Officers should also include this in their next meeting presentation. Chapters with websites might also want to insert this information.

Census Bureau employment for the 2010 Census

For most positions in the field for the upcoming 2010 Census, federal civilian annuitants may be eligible to receive both their complete annuity and their full pay.

Those interested in employment should call the 2010 Census toll-free jobs line at 1-866-861-2010. Those interested in a professional or management position can apply through the vacancy announcement at www.USAJobs.com.

Applicants should indicate that they are retired federal employees during the application process and be certain the position being applied for will allow the employee to receive their complete annuity and full pay.

Report member deaths to NARFE National headquarters

Member deaths should be reported to NARFE National Headquarters on NARFE Form F-9. The NARFE Federation and Chapter Officers Manual states it should be done by the Chapter Secretary and it also says in some chapters it is done by the Chapter Membership Chair. In my chapter, as the Chapter Service Officer, I report all deaths in my chapter as they occur to Member Services at National. I use the NARFE postcard Form F-9. As Service Officer I am aware of deaths and as part of my duties advising survivors I fill in the post card and mail it. I also know whether there is a surviving spouse to transfer the membership to. Every Chapter should have someone do this promptly following a member death.

It's very important that National know about deaths so they can transfer the membership if there is a surviving spouse and if not take the deceased off the roles, not send renewals and stop the magazine.

Periodically I also check Life and Honorary Members in our chapter and National Only life members assigned to our chapter to see if they are still with us.



Lois Todd, Ben Pappa, Representative

Getting out and meeting the Legislators

By Treva Devers, Legislative Chair

Well Congress has been busy but most of the activity has been regarding the Economic Stimulus Bills (H. R. 1/S. 1). I am sure all of you have been reading the GEMS updates that are published each Friday and sent out to each of you over the FL Federation Net.

Here in Florida I have attended the District 9 and 11 Annual Meetings and the Englewood/Venice Chapter 0717 50th Anniversary Gala. On February 18, 2009 I attended the Swearing-In Ceremony and Open House for Congressman Tom Rooney at his Punta Gorda Office. Attending with me were four (4) of his constituents in Congressional District 16 – Ben and Margaret Pappa from the Charlotte Chapter, as well as, Lois Todd and George Kretschman from the Peace River Chapter. These are the Congressman's constituents that will be using his Punta Gorda Office.

On February 28, 2009 I attended another open house, this one in Orlando for Congressman Alan Grayson. Congressman Grayson replaced Representative Ric Keller in Congressional District 8. I requested constituents from NARFE District 4 to attend the Open House with me.

A one-on-one meeting is scheduled with Representative Alan Grayson on April 20 in his Orlando Office to discuss NARFE's issues and concerns. Constituents will also be attending this meeting with me.

On March 3, 2009 I am scheduled to meet with Representative Bill Posey's District Director in his Melbourne Office and have requested constituents from NARFE Districts 3, 4, 5 and 10 to attend this meeting with me. Congressman Posey represents Congressional District 15 and replaced Congressman Dave Weldon.

President continued from front page.

I also want to congratulate all chapters taking advantage of Chapter Assistance Funds for the imaginative uses of the funds.

The Federation can be justly proud of its elected and appointed officers. As Federation President, each and every one of them has made my job infinitely easier. Oversight has been at most minimal, but never required. For this I thank you all. This will be my last Convention as Federation President. I have liked my job and I have really enjoyed getting to know so many of you! I sincerely thank you for your trust in electing me to serve you!

A final note, National President Baptiste appointed me to the Committee on Enhancing NARFE for the 21st Century last Fall. I am truly honored by the appointment and delighted that I have been assigned the area of Retention. The Committee has been hard at work and we will be submitting our work in July of this year. I invite all of you to share any suggestions you may have. They will be most welcome.

REMEMBER, PLAN TO ATTEND THE CONVENTION! REGISTRATION SO FAR INDICATES WE MAY HAVE AS MANY AS 350 IN ATTENDANCE! Please help make it a fact!

Members announce intentions to run

New officers for the Florida Federation will be elected at the May Convention. The following have announced their intentions to run for key positions: Statewide: President, Wally Roepke and Treva Devers; Executive VP, Ken Carter; VP, Richard Gerber; Secretary, Bill Leatham; Treasurer, Ruth Blackwell. In the Districts: District 1, Bob Shaw; District 2, No one announced; District 3, Charles Shannon; District 4, Colleen Welch; District 5, Jane Lemley; District 6, Tony Torchia; District 7, Angel Almodovar; District 8, Sylvia Ventura; District 9, No one announced; District 10, No one announced; District 11, Sharon Bowman.

Remember, just because someone has announced, that does not mean others cannot jump in and be nominated from the floor.

Automation

By Diana Leatham, Automation Chair

We are in a "Rob Peter to Pay Paul" mode presently. The time consumed on the FLNet electronic newsletter mailing list is creating a significant backlog on other work. There is now up to a two week lag time until we can update a web page, etc.. Your cooperation and understanding will be appreciated.

Web issues: Clients are seriously compounding this backlog problem by sending materials with embedded graphics, not attaching the graphics separately, using spaces in file names, which violates web standards, etc. It can take twenty minutes to extract embedded graphics and may require the use of OpenOffice writer to do so. Switching back and forth among programs, etc., adds considerably to time and effort. Remember that underlining is a no-no! Underling = web link. I am also getting poorly structured requests that take time to figure out. PLEASE BE ADVISED THAT FUTURE REQUESTS TO POST MATERIALS ON OUR WEBSITE THAT DO NOT CLEARLY STATE WHERE THE ITEM GOES (on what page it should be indexed), WHAT THE CAPTION SHOULD BE, AND WHAT IT REPLACES, WILL BE REJECTED. I do not have the time to read through the materials and guess where something should go. Also, NO SPACES IN FILE NAMES! My predecessor and I have been requesting your cooperation on these issues for 6 years, now we have no option but to enforce it! Work that should take minutes can take hours. Also, remember that I do not proof-read the materials; I only convert them to web pages. Proof-reading and accuracy are the author's responsibility. We are going to try some shortcuts, such as on Chapter listing, etc., to reduce maintenance. It takes about 90 minutes to create a District page, half on the Secretary's part in creating the file, and half on my part. A Chapter listing by District would take about 4 - 5 hours, about 2/3rds of it on the Secretary's part, saving easily 8 hours. We will start on this once the F-7 forms slow down. As to FLNet: We are using a classic LISTSERV (server mailing list sending system), PHPList, that permits readers to update their addresses, preferences, etc., by clicking on a link at the bottom of each message. It is extremely difficult for us to control or update your record in this system. You need to keep your current address updated using narfe.org's "Update Your Membership Record" option. The unfortunate impact of Comcast's blockage of our old system, is that a user friendly, easy to administer system had to be replaced by a rigid system involving parallel record-keeping, plus elaborate procedures to detect bad addresses. We are working towards a different installation of PHPList on another host that will give us more sending flexibility. At present, we can only transmit during the weekends, and approval of messages must be received by Saturday noon to ensure transmission.



FEEA

By Nancy Roepke, FEEA Chair

The FEEA Scholarship notice has been posted in the latest NARFE magazines. Now is the time to get the information together for your student. All of the necessary information that is needed is listed in the magazine.

For the FEEA table at the Federation Convention, I purchased a Nintendo Wii Sports video game for the main raffle prize. The cost will be reimbursed to the Federation out of the profit from the raffle. The new, unopened and unused Wii Sports game was put in storage until the convention. The tickets are 1 for \$1 or 7 for \$5. You may have gotten the wrong information earlier on the ticket pricing. These prices are the corrected version. I have been working to obtain other items for the FEEA auction table.

The FEEA Disaster Fund needs help. All of the last year's storms and fires decimated it. Please pass the word to your members. *ALERT: FEEA has moved and has a new address and phone numbers. Check [www,narfeffl.net](http://www.narfeffl.net) for more information on how to donate.*

Looking forward to seeing you at the FEEA Convention table in May.

Around the Federation



District 11 Annual Meeting



District 5 Annual Meeting



District 3 VP Charlie Shannon installing officers for Chapter



District 1 Annual Meeting



District 6 Annual Meeting



District 8 Annual Meeting



District 9 Annual Meeting

If NARFE did not exist—it would be created!

Around the Federation



Cape Coral Chapter 1002's new Board. From the left is President Marc Harris, 1st VP Bob Miller, Treasurer Mary Singer, 2nd VP Rita Sammons, Communications and Programs Chair Peg Thiel, Sgt-at-Arms Shirley Sloper, Sunshine Chair Loretta Miller, and Alzheimer's Chair Martha Furrow. Missing is Secretary Irene Eitel.



NARFE members in District 11 enjoyed "Singing in the Rain" at their Annual Social at the Broadway Palms in Ft Myers



Edna Shannon, Past President of Chapter 1137 and Charlie Shannon, District 3 VP, at the Chapter 1137 Xmas Dinner .



District 6 meets with Congressman Robert Wexler



Chapter 1074 installation: Maggie Burns, Vice President; Ted Puzio, President, Dee Hottinger; Treasurer; Anne McFarlane, Secretary; District 5 VP Jane Lemley



Members of the Strawberry Chapter celebrate it's 37th birthday with a white elephant sale. The chapter made over \$700 with the auction which will be donated to Alzheimer's research at the University of South Florida Research Center. The Strawberry Chapter has donated more than \$10,000 over the past ten years.

Around the Federation



Gulf Coast Village, a CCRC in Cape Coral, puts on an Alzheimer's Care Giver program each year and for the second consecutive year, Chapter 1002 is a co-sponsor. Pictured from the left are Chapter 1002 President Marc Harris and Alzheimer's Chair Martha Furrow, and Kevin Ahmadi and Cheryl Leftwich from Gulf Coast Village. Chapter 1002 donated \$600 and 30 of it's Cookbooks that can be sold for \$10 each, for a total donation of \$900.



Chapter 2194 officers installed: Don Nichols, Secretary; Virginia Muth, Treasurer; Joseph Hagy, 2nd VP; George Kretschman, 1st VP; Lois Todd, President



The Elected Officers of Chapter 845, from the left: Richard Goetez, 1st VP, Paul McCarty, Secretary, Bruce Roggenkamp, President, Richard Gerber, District 9 VP, Charles Fuller, 2nd VP & Membership Chair, Carolyn Craske, Treasurer, & Mary Clark, Executive Board.



Chapter 1405 Sergeant-At-Arms Officer, Clyde Young, attended the Inauguration Ball at the Washington, D.C. Naval Yard. From the left: Pauline Young (wife), Debra Jefferson (niece) and, of course, Clyde.



Chapter 1154's has adopted Sulphur Springs Elementary School to assist the children mostly from disadvantaged families. The Chapter recently presented clothing and school essentials. In the rear, from the left: Gerri Almand (School Social Worker), Juanita Martello (past Secretary 1154), Mike Rubler (1154 V.P.) Frank Nolan (Past President of Chap 1154) on far right.

How Safe is Your Federal Retirement?
 Contact the Experts 1-800-627-3394 www.narfe.org

Editor's notes

By Marc Harris, Newsletter Editor

Let's share again. I hope to see a lot of you at the PR & Newsletter table at the Convention. Again, as I did last year, if you have copies of your Newsletters and press clippings you would like to share with others, please print and bring a bunch for handouts. I also have ordered 60 copies of the NARFE PR Handbook, which should be enough for each Chapter that does not have one.

This Newsletter and our website (www.Narfefl.net) are essential Federation tools to keep our members informed. In addition to reading this Newsletter, and using it's content in your Chapter Newsletters, websites and other areas, I urge you to bookmark our website and read it often as it contains a wealth of information.

Chapters, it is essential that your members know your plans. If you are not advertising Chapter, District and Federation meeting dates, and speakers when you know them, in your newsletters and websites, please do so.

Federation elections are coming in May, and we will have some competition for officers. I urge you to seek out and speak to the candidates, and carefully evaluate their experience and plans for the Federation. The world is changing and we need to keep pace or get left behind.

Pictures, pictures and more pictures. For this issue, I put an early call out for pictures and content. I sought out pictures from the Alzheimer's Benefit Cruise, Chapter installations, and District Conferences. It is very interesting that each time I put out such a call, only a handful of people usually respond, and most do not. For this issue, however, I had more material than normal. My thanks to all who contributed. And for those who did not get their pictures into this issue, or past issues, please let me know and I will do my best to include yours in a future edition, or you may find them on www.narfefl.net in the near future.

Thanks to all of you who called/emailed me with positive comments about our new Newsletter layout. It is appreciated when the effort is recognized. And I want to thank Eileen Cameron, who, as Publisher, had our last issue printed and mailed. I think the black & white copies came out great! Eileen volunteered to publish this issue, too, and I quickly agreed. I only wish we had the funds to mail out color copies, so you all could see the improved quality of the pictures we are receiving. But wait, you can see them in color by going to our website and clicking on "Newsletter"!

Federation Officials

2008-2009

- President.....Donald Stewart
- Executive VP.....Wallace Roepke
- VP.....Kenneth Carter
- Secretary.....William Leatham
- Treasurer.....Ruth Blackwell
- Past President.....Benjamin Pappa

District Vice Presidents

- 1Robert A. Shaw
- 2Harold Bartelt
- 3Charles Shannon
- 4Colleen Welch
- 5Jane Lemley
- 6Tony Torchia
- 7Angel Almodovar
- 8Sylvia Ventura
- 9Richard Gerber
- 10Lucette Chizik
- 11James Greene

Appointees

- Alzheimer's.....Leonora Sicular
- Automation.....Diana Leatham
- Chaplain.....Maude Henderson
- CAP.....David Whalen
- Coalitions.....Herbert Sicular
- Dues WithholdingBeulah Greene
- FEEA.....Nancy Roepke
- Legislative.....Treva Devers
- NARFE-PAC.....Vacant
- Newsletter Editor.....Marc Harris
- Publisher..Eileen Cameron
- Public Relations.....Marc Harris
- Recruiting.....Ed Fleck
- Retention Chair.....James Greene
- Retention Vice Chair....Bob Lemley
- Service Officer.....John Ledman
- ZIP-Code.....Margaret Pappa
- 2009 Convention Chair.....John Ventura

* * *

Executive Board Meetings
May 12 and 15

2009 Federation Annual Convention
May 12-14

The National Active and Retired Federal Employees Association (NARFE) has been safeguarding and improving the earned rights and benefits of America's active and retired federal employees since 1921. NARFE represents some 5 million federal workers, retirees, spouses and their survivors.